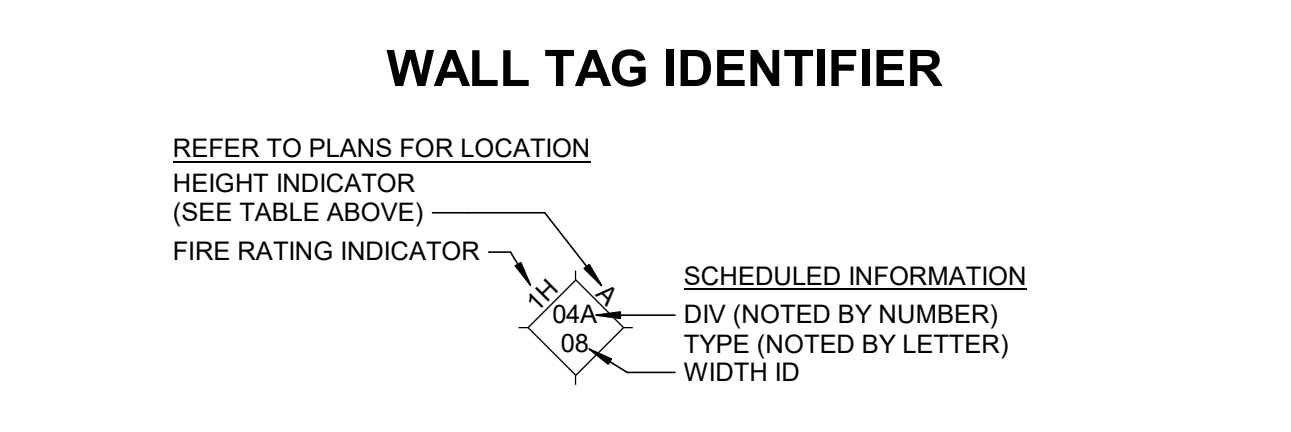


DOOR SCHEDULE																										
NO.	LEAF	REMARKS	DOOR			AIRFLOW			FRAME			DOOR OPERATION														
			WIDTH	HEIGHT	THK	W	H	MATL	TYP	HEAD	JAMB	SILL	HW SET	MANUAL	MOTOR	REMOVABLE	INTEGRATED PANEL	FLOOR LOOP	FUSIBLE LINK	KEYSTATION	MOTION DETECTOR	PUSH BUTTON	CARD READER			
C3	-		8'-8"	10'-0"	2"	STL	OHD					(none)													FIELD VERIFY DOOR SIZE. EXISTING DOOR AND FRAME TO REMAIN	C3
C4	-		8'-8"	10'-0"	2"	STL	OHD					(none)													PUSH BUTTON CONTROLS ON INTEGRATED CONTROL PANEL	C4
C5	-		8'-8"	10'-0"	2"	STL	OHD					(none)													PUSH BUTTON CONTROLS ON INTEGRATED CONTROL PANEL	C5
C6	-		8'-8"	10'-0"	2"	STL	OHD					(none)													PUSH BUTTON CONTROLS ON INTEGRATED CONTROL PANEL	C6
C7	-		8'-8"	10'-0"	2"	STL	OHD					(none)													PUSH BUTTON CONTROLS ON INTEGRATED CONTROL PANEL	C7
G-9	1		3'-0"	7'-0"	1.34"	HM	F		0"	0"	HM	F2	6	7	8	(none)									FIELD VERIFY DOOR SIZE. EXISTING DOOR AND FRAME TO REMAIN	G-9
G-9.1	-		10'-0"	16'-0"	2"	STL	HSF		0"	0"	HM	F2	6	7	8	(none)									FIELD VERIFY DOOR SIZE. EXISTING DOOR AND FRAME TO REMAIN	G-9.1
J-9	1		3'-0"	7'-0"	1.34"	HM	F		0"	0"	HM	F2	6	7	8	(none)									FIELD VERIFY DOOR SIZE. EXISTING DOOR AND FRAME TO REMAIN	J-9

WALL TYPE SCHEDULE				
WALL TAG	DIV	TYPE	MATERIAL	DESCRIPTION
04	A	08	7.625" CONCRETE MASONRY UNITS	
07	A	02	2.75" INSULATED METAL PANEL	

WALL HEIGHT LEGEND	
A	SEE SECTION / DETAIL



- GENERAL NOTES**
- FIELD VERIFY EXISTING CONDITIONS.
 - REFER TO FIRE PROTECTION DRAWINGS FOR FIRE HOSE AND FIRE EXTINGUISHERS LOCATIONS.
 - SIGNAGE:
 - PROVIDE DOOR NUMBER SIGNS FOR EXTERIOR MAN DOORS AND OVERHEAD DOORS, ON EXTERIOR AND INTERIOR OF DOORS.
 - AT OVERHEAD DOORS, ON EXTERIOR, MOUNT SIGN TO WALL ABOVE DOORS (BELOW WALL PACK LIGHT OR EQUIPMENT).
 - INTERIOR MOUNT FOR OVERHEAD DOOR SIGN TO BE ON CENTER OF DOORS.
 - SIGNS TO MATCH MATERIAL, COLORS, AND TEXT SIZE AND FONT OF EXISTING SIGNS.
 - PROVIDE SIGNS LOCATING ACCESSIBLE MEANS OF EGRESS AT DOORS THAT ARE NOT ACCESSIBLE.
 - INSULATED METAL WALL PANELS EXTERIOR PERIMETER TO BE FURNISHED WITHOUT FACTORY INSTALLED SEALANT, AND ARE TO BE INSTALLED WITH FIELD APPLIED PVC FOAM SEALANT WITH PRESSURE SENSITIVE ADHESIVE. (BASIS OF DESIGN PRODUCT: NORSEAL V740 SERIES)
 - FOR PIPE BOLLARD DETAILS ON SHEET 21-08-A-710.
 - REFER TO REMOVABLE GUARD RAIL DETAIL ON SHEET 21-08-A-710.



CONSULTANTS:

SEAL ON THIS DOCUMENT AUTHORIZED BY:

PROJECT INFORMATION:

**AEP IPU ALMC
FSW LINE 1
ANNA, OH**



CLIENT INFORMATION:



**HDMA Honda
Development and
Manufacturing of
America**

12500 Meranda Rd
Anna, OH
45302

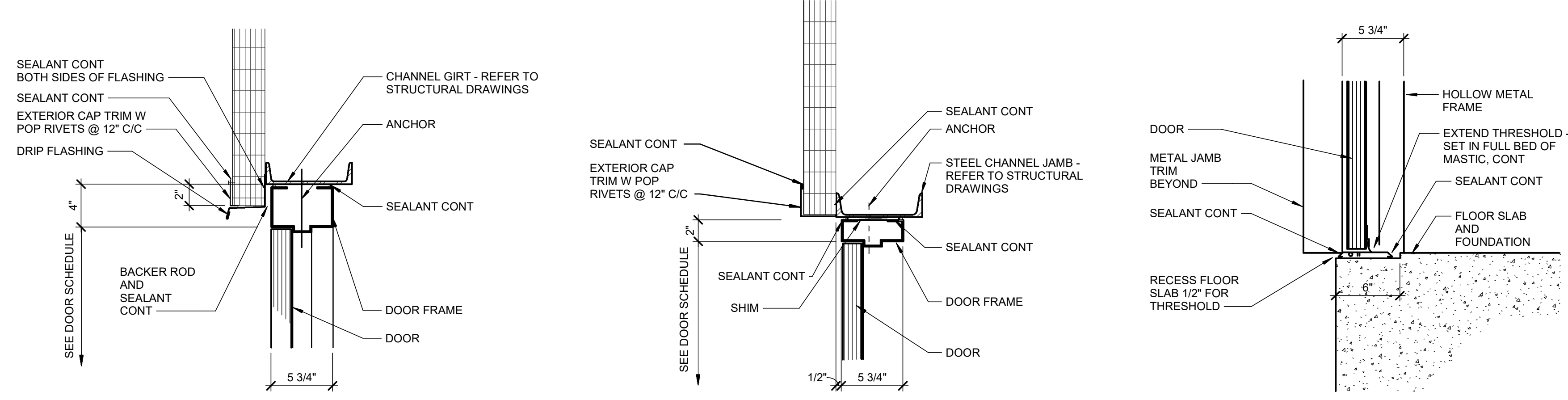
CLIENT PROJECT NO: XXX-XXXX-XX

NO.	DATE	SUBJECT
1	10-03-23	IFB Line 1

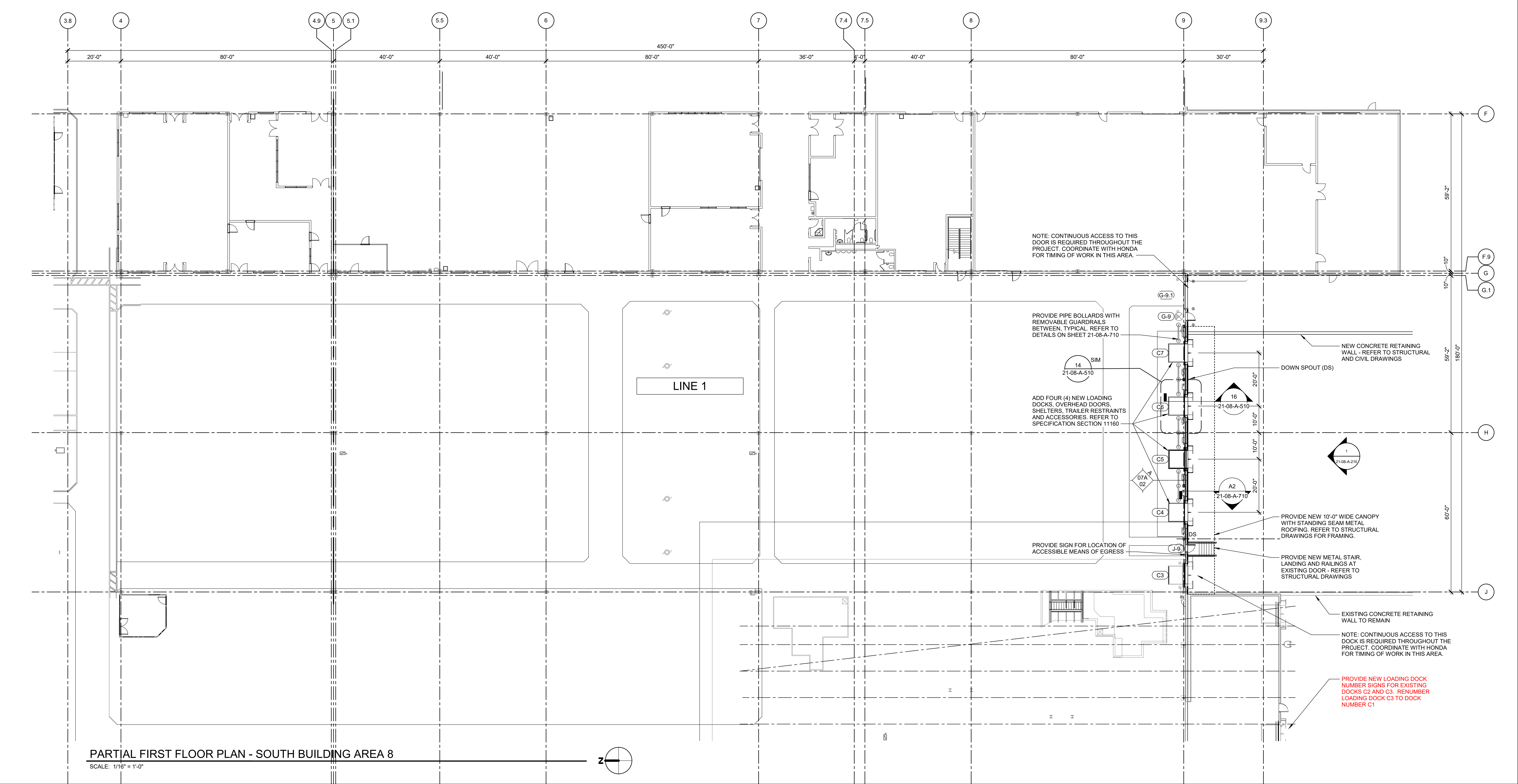
PROJECT NO: 023-03103-00
PROJECT MANAGER: S. SPEER
DESIGNED: S. SALMAN
CHECKED: K. COSTELLO

DRAWING TITLE:
**PARTIAL FIRST FLOOR
PLAN - SOUTH BUILDING
AREA 8**

DRAWING NO:
21-08-A-112

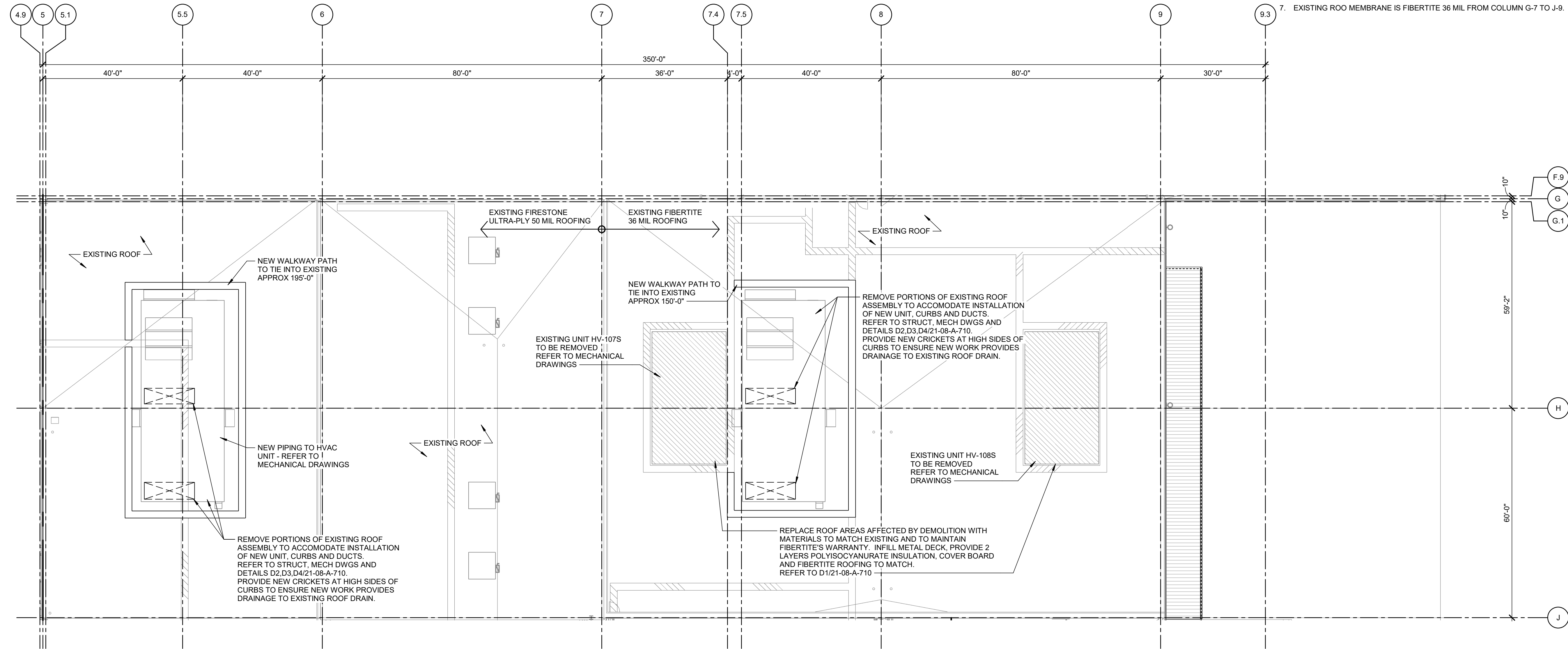


6 IMP MAN DOOR HEAD SCALE: 1 1/2" = 1'-0"
7 IMP MAN DOOR JAMB SCALE: 1 1/2" = 1'-0"
8 IMP MAN DOOR SILL SCALE: 1 1/2" = 1'-0"



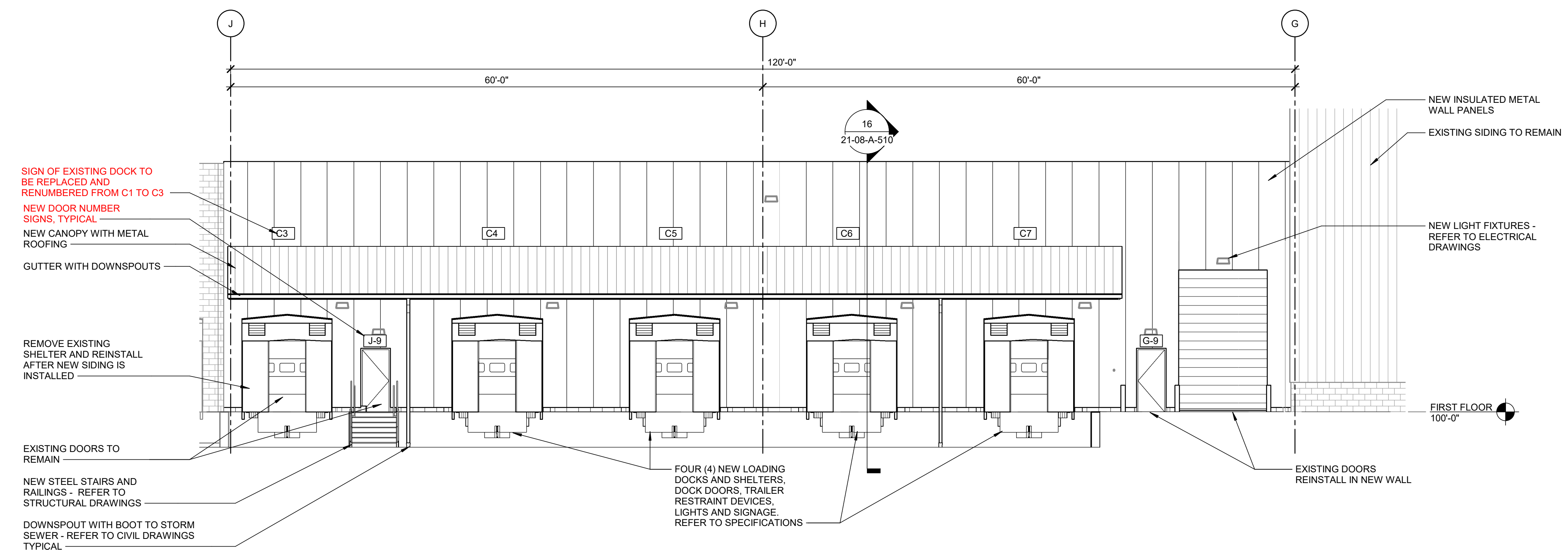
ROOF PLAN NOTES

- ALL PENETRATIONS SHOWN AND NOT SHOWN ON THIS DRAWING TO BE FLASHED/SEALED.
- REFER TO MECHANICAL AND PLUMBING DRAWINGS FOR EXACT LOCATIONS AND SIZES OF ROOF PENETRATIONS.
- PROVIDE SPLASH BLOCKS AT:
 - ROOF EQUIPMENT DRAINS
- TAPERED INSULATION CRICKETS AT UPHILL SIDE OF ROOF OBSTRUCTIONS. ROOF CURBS FOR EXAMPLE.
- USE MANUFACTURER RECOMMENDED CLEANER TO PREPARE THE MEMBRANE TO BE WELDED TO THE WALKWAY MATERIAL. POSITION THE WALKWAY MATERIAL ROLLS. CUT THE WALKWAY MATERIAL INTO MAXIMUM 10'-0" LENGTHS AND POSITION WITH A MINIMUM 1" GAP BETWEEN ADJACENT PIECES TO ALLOW FOR WATER DRAINAGE. CUT WALKWAY MATERIAL TO CLEAR MEMBRANE SPLICES. APPROX 4" GAP IN WALKWAY. THE ATTACHMENT OF THE WALKWAY MATERIAL TO THE MEMBRANE IS PERMANENT AND THIS WILL ALLOW ACCESS TO THE FIELD SEAMS. ALLOW THE WALKWAY TO RELAX PRIOR TO WELDING IN PLACE. USING AUTOMATED WELDER, WELD ALL FOUR SIDES OF THE WALKWAY TO THE MEMBRANE. ALLOW FOR NO GAPS IN THE WELDING TO ENSURE A WATER TIGHT INSTALLATION. FOLLOW MANUFACTURER'S WRITTEN RECOMMENDATIONS FOR SPEED AND TEMPERATURE SETTINGS. PERFORM A TEST WELD PRIOR TO THE INSTALLED MEMBRANE. PHYSICALLY INSPECT THE WELDS ON A DAILY BASIS AND IMMEDIATELY REPAIR DEFECTS. LIMIT MATERIAL AND TRAFFIC ON COMPLETED WALKWAYS. PROVIDE PROTECTION FROM DAMAGE BY TRAFFIC OR WORK BY OTHER TRADES.
- EXISTING ROOF MEMBRANE IS FIBERTITE 36 MIL FROM COLUMN G-7 TO J-9.



PARTIAL ROOF PLAN - SOUTH BUILDING AREA 8

SCALE: 1/16" = 1'-0"



PARTIAL SOUTH ELEVATION

SCALE: 1/8" = 1'-0"

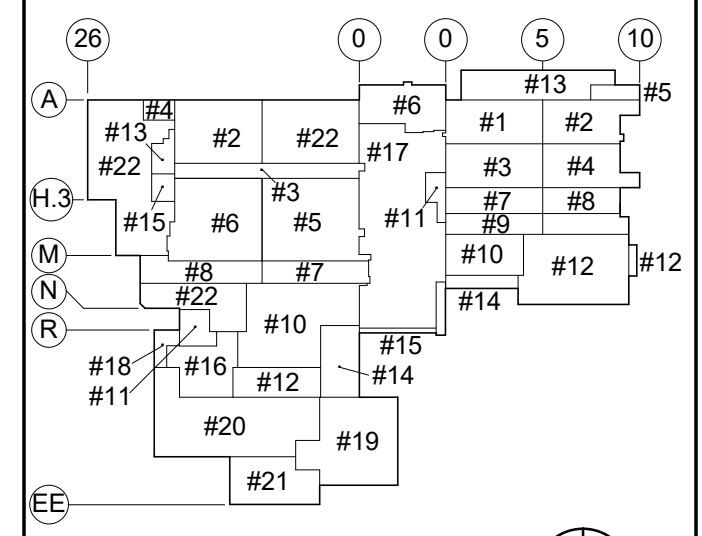


CONSULTANTS:

SEAL ON THIS DOCUMENT AUTHORIZED BY:

PROJECT INFORMATION:

**AEP IPU ALMC
FSW LINE 1
ANNA, OH**



CLIENT INFORMATION:



**HDMA Honda
Development and
Manufacturing of
America
12500 Meranda Rd
Anna, OH
45302**

CLIENT PROJECT NO: XXX-XXXXX-XX

NO.	DATE	SUBJECT
1	10-03-23	IFB Line 1

SSOE, Inc.
1001 Madison Avenue
Toledo, OH 43604
T. (419) 255-3830

PROJECT NO: **023-03103-00**
PROJECT MANAGER: S. SPEER
DESIGNED: S. SALMAN
CHECKED: K. COSTELLO

DRAWING TITLE:
**PARTIAL ROOF PLAN AND
EXTERIOR ELEVATION**

DRAWING NO:
21-08-A-210